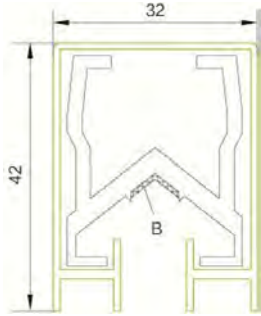


Parts of the conductor rail system

W32 System

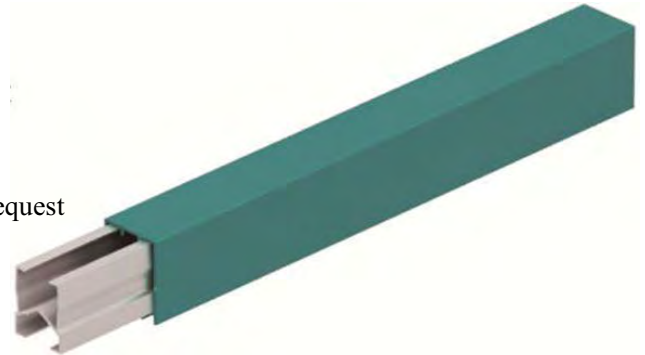
Scale 1:1



Aluminum conductor

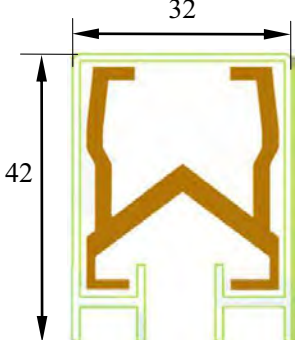
Standard length:6.0m,other length on request
Support spacing:1.8m or 2.0m.

Stainless steel belt
B=9.8mm



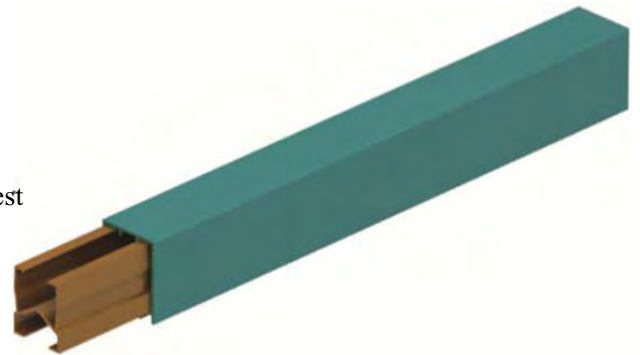
| Type | Conductor material | Cross section(mm ²) | Max. current(A) | Leakage-distance | Resistance | Weight (kg) | Cat-No. |
|----------------|--------------------|---------------------------------|-----------------|------------------|------------|-------------|---------|
| JDC-W-230/320 | Aluminum | 230 | 320 | 80 | 0.153 | 0.96 | 320126 |
| JDC-W-285/500 | Aluminum | 285 | 500 | 80 | 0.116 | 1.13 | 320136 |
| JDC-W-360/630 | Aluminum | 360 | 630 | 80 | 0.087 | 1.38 | 320156 |
| JDC-W-420/800 | Aluminum | 450 | 800 | 80 | 0.067 | 1.50 | 320166 |
| JDC-W-550/1000 | Aluminum | 550 | 1000 | 80 | 0.058 | 1.83 | 320176 |
| JDC-W-600/1250 | Aluminum | 600 | 1250 | 80 | 0.046 | 2.01 | 320186 |

Scale:1:1



Copper conductor

Standard length:6.0m,other length on request
Support spacing:1.8m or 2.0m.



| Type | Conductor material | Cross section(mm ²) | Max. current(A) | Leakage-distance | Resistance | Weight (kg) | Cat-No. |
|-----------------|--------------------|---------------------------------|-----------------|------------------|------------|-------------|---------|
| JDC-WT-230/800 | Copper | 230 | 800 | 80 | 0.067 | 2.43 | 320266 |
| JDC-WT-300/1000 | Copper | 300 | 1000 | 80 | 0.058 | 3.05 | 320276 |
| JDC-WT-360/1250 | Copper | 360 | 1250 | 80 | 0.046 | 3.56 | 320286 |
| JDC-WT-450/1600 | Copper | 450 | 1600 | 80 | 0.039 | 4.37 | 320296 |

The neutral insulation cover is marked yellow -green on one side.

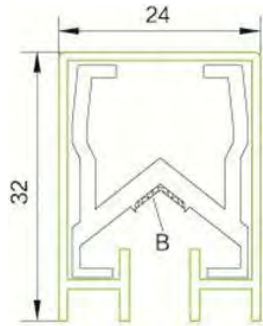
Standard insulation suitable from
High temperature insulation suitable from
Low temperature insulation suitable from

-20 °C -+70 °C ambient temperature.
-10 °C -+115 °C ambient temperature.
-40 °C -+85 °C ambient temperature.

Parts of the conductor rail system

W24 System

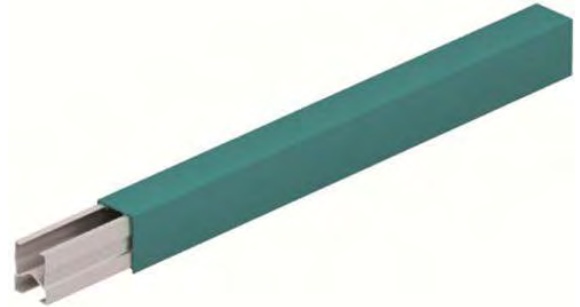
Scale 1:1



Aluminum conductor

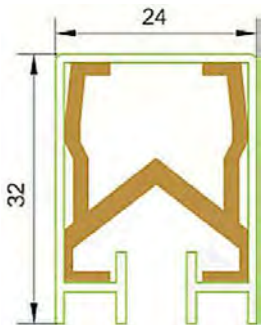
Standard length:6.0m,other length on request
Support spacing:1.5m.

Curves
Min.R=1.2m
Stainless steel belt
B=8.5mm



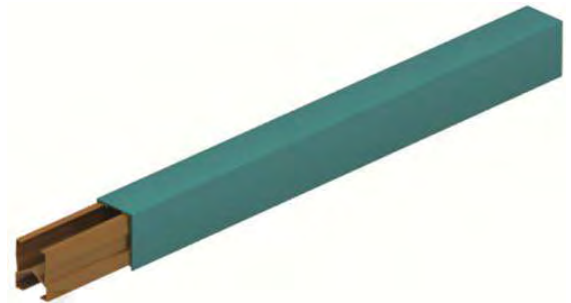
| Type | Conductor material | Cross section(mm ²) | Max. current(A) | Leakage-distance | Resistance | Weight (kg) | Cat-No. |
|---------------|--------------------|---------------------------------|-----------------|------------------|------------|-------------|---------|
| JDC-W-160/250 | Aluminum | 160 | 250 | 45 or 80 | 0.203 | 0.63 | 240126 |
| JDC-W-180/300 | Aluminum | 180 | 300 | 45 or 80 | 0.187 | 0.71 | 240136 |

Scale:1:1



Copper conductor

Standard length:6.0m,other length on request
Support spacing:1.5m.



| Type | Conductor material | Cross section(mm ²) | Max. current(A) | Leakage-distance | Resistance | Weight (kg) | Cat-No. |
|----------------|--------------------|---------------------------------|-----------------|------------------|------------|-------------|---------|
| JDC-WT-160/500 | Copper | 160 | 500 | 45 or 80 | 0.112 | 1.68 | 240256 |
| JDC-WT-180/600 | Copper | 180 | 600 | 45 or 80 | 0.098 | 1.86 | 240266 |
| JDC-WT-200/700 | Copper | 200 | 700 | 45 or 80 | 0.087 | 2.04 | 240276 |
| JDC-WT-230/800 | Copper | 230 | 800 | 45 or 80 | 0.076 | 2.30 | 240286 |

Standard insulation suitable from

-20°C-+70°C ambient temperature.

High temperature insulation suitable from

-10°C-+115°C ambient temperature.

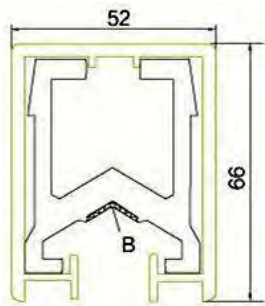
Low temperature insulation suitable from

-40°C-+85°C ambient temperature.

Parts of the conductor rail system

W52 System

Scale 1:2



Aluminum conductor

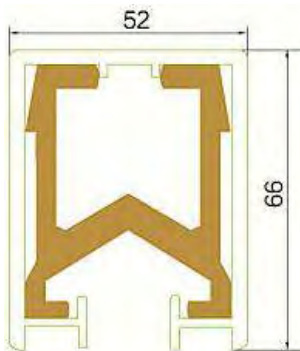
Stainless steel belt

B=16mm

Standard length:6.0m,other lengths on request

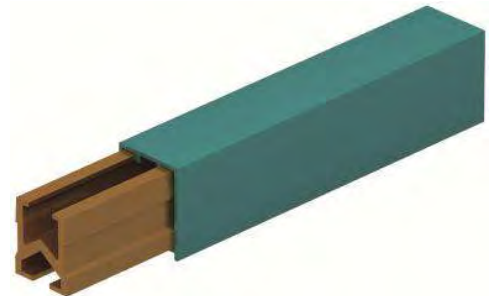


| Type | Conductor material | Cross section(mm ²) | Max. current(A) | Leakage-distance | Resistance | Weight (kg) | Cat-No. |
|-----------------|--------------------|---------------------------------|-----------------|------------------|------------|-------------|---------|
| JDC-W-900/1500 | Aluminum | 900 | 1500 | 100 | 0.039 | 2.85 | 390116 |
| JDC-W-1000/1600 | Aluminum | 1000 | 1600 | 100 | 0.037 | 3.25 | 390126 |
| JDC-W-1350/2000 | Aluminum | 1350 | 2000 | 100 | 0.028 | 4.32 | 390136 |
| JDC-W-1600/2500 | Aluminum | 1600 | 2500 | 100 | 0.018 | 7.99 | 390156 |
| JDC-W-2000/3000 | Aluminum | 2000 | 3000 | 100 | 0.015 | 6.07 | 390166 |



Copper conductor

Standard length:6.0m,other lengths on request



| Type | Conductor material | Cross section(mm ²) | Max. current(A) | Leakage-distance | Resistance | Weight (kg) | Cat-No. |
|------------------|--------------------|---------------------------------|-----------------|------------------|------------|-------------|---------|
| JDC-WT-500/1600 | Copper | 500 | 1600 | 100 | 0.036 | 5.12 | 390226 |
| JDC-WT-700/2000 | Copper | 700 | 2000 | 100 | 0.026 | 6.91 | 390236 |
| JDC-WT-850/2500 | Copper | 850 | 2500 | 100 | 0.0818 | 8.25 | 390256 |
| JDC-WT-1000/3000 | Copper | 1000 | 3000 | 100 | 0.011 | 9.65 | 390266 |
| JDC-WT-1200/3500 | Copper | 1200 | 3500 | 100 | 0.009 | 11.42 | 390276 |
| JDC-WT-1600/4500 | Copper | 1600 | 4500 | 100 | 0.008 | 14.99 | 390286 |
| JDC-WT-1800/5000 | Copper | 1800 | 5000 | 100 | 0.007 | 16.75 | 390296 |

The neutral insulation cover is marked yellow-green on one side.

Standard insulation suitable from -20°C-+70°C ambient temperature.

High temperature insulation suitable from -10°C-+115°C ambient temperature.

Low temperature insulation suitable from -40°C-+85°C ambient temperature.

Parts of the conductor rail system

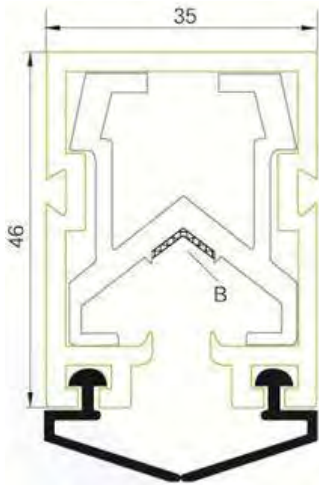
W35 Enclosed System*

Standard length :6.0m,other lengths on quest.

| Type | Conductor material | Cross section(mm ²) | Nominal current(A) | Leakage-distance | Resistance | Weight (kg) | Cat-No. |
|----------------|--------------------|---------------------------------|--------------------|------------------|------------|-------------|---------|
| JDC-WE-230/320 | Aluminum | 230 | 320 | 80 | 0.153 | 0.96 | 350126 |
| JDC-WE-285/500 | Aluminum | 285 | 500 | 80 | 0.116 | 1.79 | 350136 |
| JDC-WE-360/600 | Aluminum | 360 | 600 | 80 | 0.087 | 2.04 | 350156 |
| JDC-WE-420/800 | Aluminum | 420 | 800 | 80 | 0.067 | 2.16 | 350166 |

Only standard Housing is available.

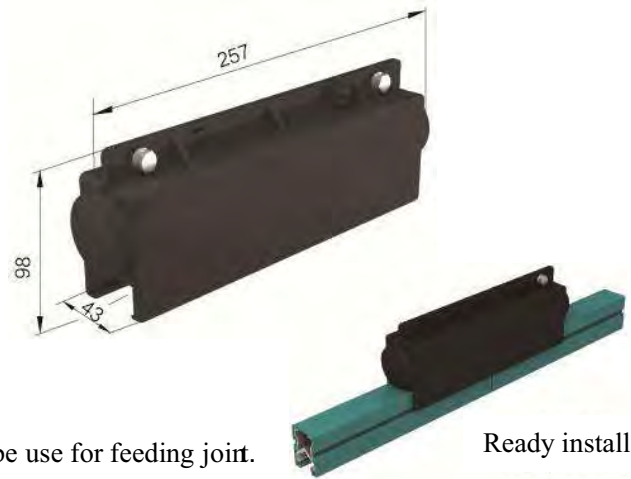
Section view



Stainless steel belt
B=9.8mm



Jointing box



Every joint could be use for feeding joint.

Ready installed

| Type | Weight(kg) | Material | Cat.-No. |
|----------|------------|----------|----------|
| W35LJ-1 | 0.137 | Plastic | 353401 |
| W35LJ-5* | 0.155 | Polyster | 353405 |

Hanger



Be used for high temperature.

| Type | Weight(kg) | Material | Cat.-No. |
|----------|------------|----------|----------|
| W35DJ-1 | 0.066 | Plastic | 353901 |
| W35DJ-5* | 0.075 | Polyster | 353905 |

Be used for high temperature.

Joints*

*

End cap**

End cap**

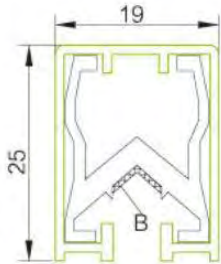


**Please see "W32 System"
Cat.-No.is same.

Parts of the conductor rail system

W19 Sys tem

Scale 1:1



Aluminum conductor

Stainless steel belt
B=7.2mm



Length

Standard length:4.5m,other length on request

Support spacing :1.5m.

Curves

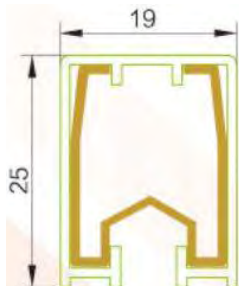
Min.R=0.8m

Main application:For overhead and elongated tracks for cranes,monorails,electric hoists,electric tools,stacking systems,as well as many other applications for supplying power to moving power loads.

For producing line,the support spacing is 0.5m -0.8m

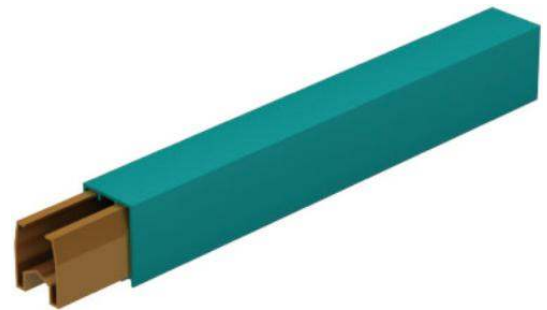
| Type | Conductor material | Cross section(mm ²) | Max. current(A) | Leakage-distance | Resistance | Weight (kg) | Cat-No. |
|---------------|--------------------|---------------------------------|-----------------|------------------|------------|-------------|---------|
| JDC-W-100/150 | Aluminum | 100 | 150 | 35 or 80 | 0.376 | 0.46 | 190135 |

Scale: 1:1



Copper conductor

Standard length:4.5m,other length on request



| Type | Conductor material | Cross section(mm ²) | Max. current(A) | Leakage-distance | Resistance | Weight (kg) | Cat-No. |
|----------------|--------------------|---------------------------------|-----------------|------------------|------------|-------------|---------|
| JDC-WT-50/150 | Copper | 50 | 150 | 35 or 80 | 0.376 | 0.63 | 190255 |
| JDC-WT-65/200 | Copper | 65 | 200 | 35 or 80 | 0.289 | 0.75 | 190265 |
| JDC-WT-110/300 | Copper | 110 | 300 | 35 or 80 | 0.195 | 1.15 | 190275 |
| JDC-WT-130/500 | Copper | 130 | 500 | 35 or 80 | 0.156 | 1.33 | 190285 |

The neutral insulation cover is marked yellow-green on one side.

Standard insulation suitable from -20°C-+70°C ambient temperature.

High temperature insulation suitable from -10°C-+115°C ambient temperature.

Low temperature insulation suitable from -40°C-+85°C ambient temperature.